

NCRPC NEWS

North Central Regional Planning Commission
Serving Kansans Since 1972

June/July 2008
www.ncrpc.org

Executive Board

Chair:
Marcia Funke, Washington Co.
Vice Chair:
David Thurlow, Clay Co.
Secretary/Treasurer:
Chuck Heidrick, Mitchell Co.
Executive Board Members:
Steve Errebo, Lincoln Co.
Dwight Frost, Jewell Co.
Bill Garrison, Cloud Co.
Judy Irvin, City of Salina
Mick Keating, Marshall Co.
Vicki Koepsel, Saline Co.
Ray McGavran, Ottawa Co.
Jonathan Mitchell,
City of Ellsworth
Joe Nold, Dickinson Co.
Virgil Palen, Mitchell Co.
Abner Perney, City of Salina
Kermit Rush, Ellsworth Co.
Frank Rytch, Republic Co.

NCRPC Staff

Charlene Abell
Sherry Angell
Brett Beck
Margaret Cathey
Sara Crangle
Connie Cyr
John Cyr
Jeff Gansel
Dell Gier
Jeff Maska
Doug McKinney
Deb Ohlde
Debra Peters
Pepper Roberg
Lori Thielen
Rod Thompson
Carol Torkelson
Todd Tuttle

Upcoming Events

Thursday, June 26, 2 p.m.
Thursday, July 31, 2 p.m.
Executive Board Meetings

**Fiscal Year 2009 CDBG Grant
Application Deadlines**
Aug. 29, 2008: Housing
Oct. 1, 2008: Water/Sewer
Oct. 31, 2008: Community
Facilities

THREE YOUTH RECOGNIZED IN CONTEST

Three high school seniors have been selected to receive cash awards for their work submitted as part of the second annual Rural Voices Youth Contest.

Michaela Koch, Clifton-Clyde High School, won the top award and \$1,000. Joel Bremerman and Zach McClure, Tescott High School, also were recognized and won \$500 and \$250, respectively. The top three entries are available at www.eyeonkansas.org.
The NCRPC Executive



This photo of the Clifton-Clyde Eagles football team is one of Koch's favorite photos that she submitted with her winning entry.



Michaela Koch

Board of Directors recently took action to re-name the youth contest in honor of John Cyr, who stepped down as NCRPC Executive Director in April after 22 years in that role. It is now called the John R. Cyr Rural Voices Award.

Debra Ohlde, NCRPC Assistant Executive Director, said the three winning entries were all photo oriented and reflected the theme of "Rural Kansas ... A Proud Heritage."

Koch's favorite photo from the 16 that she sub-

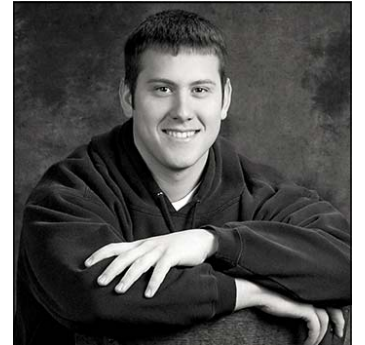


Joel Bremerman

mitted was of her school's football team.

"When I read the guidelines for the contest, it said to describe what rural Kansas meant to me," Koch said. "A huge part of my perspective of rural Kansas is growing up in a small community where sports have a large impact on people."

Koch will attend Kansas State University and major in advertising. Bremerman will attend Wichita State University and major in athletic training. McClure



Zach McClure

will attend Baker University and major in biology.

Ohlde said several new high schools were represented by this year's entries.

"We hope to continue to broaden the participation each year," Ohlde said. "One high school used it as a spring board for senior projects and that would certainly be something we would recommend for others as well."

Details of the next Rural Voices Youth Contest are expected in Fall 2008.



WORKFORCE SEMINAR TO BE IN SALINA

A Workforce Seminar is planned for Tuesday, July 8 at the K-State Salina Campus. The event, which is sponsored by the Salina Area Chamber of Commerce is scheduled to begin at 9:30 a.m. and conclude at 3:30 p.m.

The seminar title is "Tools for Today's Competitive Business: New Thinking and Strategies that Generate Growth."

Topics covered include trends in workforce development, legislative issues affecting business, workforce development strategies, financing expansion and growth. In addition, Secretary of Commerce David Kerr will be the keynote speaker and will discuss current and future trends in business in Kansas and the role of the Kansas Department of Commerce.

The afternoon will feature breakout sessions that will divide the group into two: those interested in workforce issues and those interested in financing issues.

To register, contact Aaron White at the Salina Area Chamber of Commerce at 785-827-9301 or by email at awhite@salinakansas.org.

FROM THE DIRECTOR'S DESK: STORMS A REMINDER TO EVALUATE PREPAREDNESS

Severe storms can strike without much warning resulting in destruction and instant change. Consider Thursday evening, May 29, 2008. That night a vortex skirted Glen Elder and rural Mitchell County before assaulting Jewell and then parts of Republic County.

Recall your whereabouts on Wednesday evening, June 11, 2008. I was on the Dane G. Hansen Reservation in Phillips County with other Boy Scout leaders from northern and western Kansas. As outdoor ceremonies concluded that evening several of us watched an innocent looking cumulus cloud mushroom 120 miles to the east. It swiftly became much wider and taller as a wall cloud and spawned EF3 and EF4 tornadoes in Saline, Dickinson, Geary and Riley counties.

We need to share our appreciation for the public servants who warn us in advance of the oncoming storms, police the disaster areas, coordinate aid, clear



Doug McKinney became NCRPC Executive Director in April 2008.

paths and debris and reinstate power. Preparation for such emergencies is also important.

To prepare for any disaster, households as well as communities should have evacuation plans. Such actions can help residents evacuate their homes quickly to reach safety. Those needing to leave their homes to seek shelter optimally will have a photo ID with them. Of value is a strong box to store important paperwork, property records, photos and any other irreplaceable documents. An emer-

gency kit including a day or two of medications is invaluable. Three days worth of non-perishable food items and water is also recommended.

Moreover, individuals and entities can insure themselves so they can better manage the rebuilding process. Business owners might consider income insurance, which covers the costs to replace revenue, payroll and operating expenses if it is closed while repairs are being made. We all should annually review policies to make sure rebuilding would be covered based on current construction costs.

At North Central Regional Planning Commission we are fiscally managing regional Homeland Security Councils, coordinating health department incident preparation, encouraging business planning, and assisting in a variety of capital improvement planning by units of government — all so you are better prepared for whatever lies ahead.

GRANT PROJECTS AWARDED IN REGION

Two areas of the region were recently notified that they will receive grant funds for projects for which they had applied.

Board members of the Original Marshall County Pony Express Home Station, Inc., will receive a grant of \$50,564 from the Kansas State Historical Society for a Heritage Trust Fund Grant. The project will

be matched with approximately \$12,600 in local funds. Primary goals of the project are to preserve the Original Pony Express Home Station No. 1, located in downtown Marysville, with the majority of the funds being budgeted for roof replacement.

Lincoln County will receive \$280,400 from the Community Development Block Grant Program ad-

ministered by the Kansas Department of Commerce to construct a new fire station/emergency services facility for the Sylvan Grove Rural Fire District. The project will be matched with approximately \$175,370 in local funds. The new building will be constructed in downtown Sylvan Grove on K-181 Highway.

Both projects will get under way this summer.



Board Takes Field Trip. The NCRPC Executive Board took a field trip to an ethanol plant for its May 22 meeting. Members of the board and staff toured Nesika Energy, LLC, rural Scandia.

JEWELL SEEKING URGENT NEED FUNDS AFTER STORM

Devastation followed the path of tornadoes that marched through North Central Kansas on May 29.

The City of Jewell received extensive damage with many homes and businesses being affected.

The City of Jewell is pursuing assistance from the Kansas Department of

Commerce in the Urgent Need category to help replace its water tower and essential pumping equipment that was destroyed. Insurance proceeds are well below replacement estimates. The city has procured an engineer and is working with the NCRPC and the Kansas Department of Commerce.



This photo shows the crumpled remains of the City of Jewell's water tower following the May 29 tornado.

TWO JOIN NCRPC STAFF IN JUNE



Charlene Abell joins the NCRPC as receptionist/accounts receivable clerk. Charlene was born and raised in Beloit.

The last 26 years Charlene has worked for the City of Beloit. She began work in the city office in 1982 working as a utilities clerk and an accounts payable clerk. She became the Beloit City Clerk in 1990.

Charlene completed Wichita State University's program to become a Certified Municipal Clerk and had begun the Master Municipal Clerk certification process.

Charlene has two daughters and one son, all of whom live in Beloit. She has five granddaughters and one grandson on the way.

She is active in the Beloit community and serves as Secretary for the Solomon Valley Raceway and the Beloit Rotary. She is also a Mitchell County Fair Board member and is the Beloit Unit Secretary of the Salvation Army.

Her favorite hobbies include anything dealing with racing, gardening, shopping for antiques, and spending time with grandkids. She has also learned to hunt and fish.



Sara Crangle joins the NCRPC as a Community Development Specialist. Born in Illinois outside of Chicago, she moved to rural Lincoln County with her family in 1987. She is the seventh of nine children.

Upon graduation from high school, Sara attended The University of Kansas and graduated in 2004 with a Bachelor of Arts in Geography. She worked as a financial aid counselor for a small arts and design college in Denver for two years before going on to graduate school.

In 2008, Sara completed her Master of Arts degree in Geography from Miami University, Oxford, Ohio. Sara studied abroad twice and has traveled fairly extensively in her lifetime, which is something that she says has given her a unique perspective on rural community development and enhancement. Her thesis was "Dynamic Neighborhood Identities: The Role of Gentrification and Consumption Upon Neighborhood Identity Politics."

Sara lives in Lincoln County with her family and enjoys baking and swimming.

SALINA AIRPORT AUTHORITY CONTINUES TO EVOLVE

Commercial air service and economic development often go hand-in-hand.

The Salina Airport Authority currently has several initiatives in place to enhance economic devel-



opment. The Salina Airport Authority, which has a board of directors and full-time staff, is home to the Salina Municipal Airport, the Salina Aviation Service Center and the Salina Airport Industrial Center.

The Salina Municipal Airport is the only commercial service airport serving Salina/Saline County and a 22-county area comprising North Central Kansas. The airport is home base for a wide variety of businesses and operations. Some of these include Great Lakes

Airlines, America Jet at SLN, Flower Aviation, Kansas Army National Guard Aviation Support Facility, Kansas State University at Salina, Kansas Highway Patrol Aviation, Professional Flight Training, LLC, Hawker Beechcraft Corporation and the corporate flight departments for Blue Beacon International, Geoprobe Systems, Pepsi Cola Bottling Co., Plains Environmental, Premier Pneumatics, Inc., and Bradley Trucking Co. The air traffic control tower keeps busy throughout the year with aircraft operations exceeding 80,000.

The Salina Municipal Airport currently offers two flights daily to Kansas City and two flights daily to Denver. Demand for these flights is increasing. In May, passenger levels reached 350 as compared to just 185 during May 2007.



Construction is under way on a new hangar/office complex at the SLN Aviation Service Center. The hangar is targeted for completion in Fall 2008.

The Salina Aviation Service Center has two major projects in the works. One is the 69,000 square foot new hangar/office complex currently under construction. The hangar will be able to accommodate a 100-foot wingspan and 28-foot tail height. The space will feature hangar space, multi-purpose office space and a customer service area.

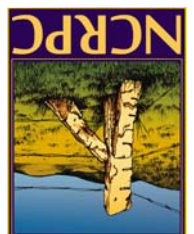
A second project is the announcement in late May that detailed design work has begun for a massive 10 to 15 year development project at the Salina Aviation Center to accommodate short- and long-term aerospace growth planned by the Salina Airport

Authority. It includes more than 2 million square feet of hangar, shops and office space spread over 100 acres of airport land. BWR Corporation, Salina, Kansas, has been selected to complete the multi-year design project. The project encompasses a large redevelopment area that has the 1950 features of when the airport was a U.S. Air Force Strategic Air Command Base.

The last facet of the Salina Airport Authority is the Salina Airport Industrial Center, which is home to several businesses.

For more information, visit salinaairport.com. For flight information, visit www.flysalina.com.

Know others who would like to receive this newsletter? Prefer e-mail format? Send contact information to rlhelen@nckcn.com. Feedback is always welcome.



North Central Regional Planning Commission
109 N. Mill, P.O. Box 565, Beloit, KS 67420
Phone: 785-738-2218
Fax: 785-738-2185
www.ncrpc.org