

NCRPC NEWS

North Central Regional Planning Commission
Serving Kansans Since 1972

June/July 2010
www.ncrpc.org

Executive Board

Chair:

David Thurlow, Clay Co.

Vice Chair:

Steve Errebo, Lincoln Co.

Secretary/Treasurer:

Brian Eilert, Mitchell Co.

Executive Board Members:

Tom Arpke, City of Salina

Johnita Crawford, Cloud Co.

Dwight Frost, Jewell Co.

Judy Irvin, City of Salina

Mick Keating, Marshall Co.

Vicki Koepsel, Saline Co.

Ray McGavran, Ottawa Co.

Murray McGee, Mitchell Co.

Joe Nold, Dickinson Co.

Roger Otott, Washington Co.

Virgil Palen, Mitchell Co.

Kermit Rush, Ellsworth Co.

Frank Rytch, Republic Co.

Tim Vandall, City of Ellsworth

NCRPC Staff

Charlene Abell

Sherry Angell

Brett Beck

Margaret Cathey

Connie Cyr

John Cyr

Mandy Fincham

Jeff Gansel

Dell Gier

Devin Karraker

Jeff Masko

Nichole McDaniel

Cade McDonald

Doug McKinney

Deb Ohlde

Debra Peters

Pepper Roberg

Lori Thielen

Rod Thompson

Carol Torkelson

Todd Tuttle

Upcoming Events

Thursday, July 29, 2 p.m.

Executive Board Meeting
**Fiscal Year 2011 CDBG Grant
Application Deadlines**

Aug. 31, 2010: Housing

Sept. 30, 2010: Water/Sewer

Oct. 29, 2010: Community

Facilities

HOUSEHOLD WEATHERIZATION PROGRAM CONTINUES TO IMPROVE HOUSING STOCK

A total of 265 units received improvements through the household weatherization program that the NCRPC administers during the 2009-2010 program year. This resulted in 265 families benefitting with an average energy cost savings of 3823 KWH.

The program increases energy efficiency of qualified residential housing. The NCRPC oversees the program in 33 Kansas counties.

While housing occupants benefit from lower energy usage and increased comfort, according to Margaret Cathey, NCRPC Weatherization Director, the benefits are broader.



This Gove County home received weatherization improvements that are estimated to save \$3,290 annually in utility costs.

"I think it's important to understand that the program doesn't just benefit current house occupants, but should benefit future renters and owners for years to come," Cathey says. "In turn, our communities benefit from improved housing stock."

Program interest is high with the NCRPC now maintaining a long waiting list.

Funding for the program comes from the Low Income Energy Assistance Program

(LIEAP) and the Department of Energy (DOE). There has been talk of possibly extending the increased funding for another two years.

For more information, visit www.ncrpc.org/services/housing_weatherization.html.

GUEST SPEAKER TALKS OF 5TH AMENDMENT

Kansas Farm Bureau Legal Foundation Director, Mike Irvin, told NCRPC Executive Board members that the 5th Amendment remains the bedrock principle to protect property because that is the basis of this country's economic production.

"This amendment states... 'nor shall private property be taken for public use, without just compensation,'" Irvin says.

Irvin was the guest speaker at the board's May 27 meeting in Beloit.



Mike Irvin, KFB Legal Foundation Director, spoke to the NCRPC Executive Board in May about eminent domain and land use.

Topics addressed were land use concerns including leases associated with wind farm developments, pipelines and transmission lines.

"These issues are affecting the counties and landowners and so we have some things in common," Irvin says. "We need to work together."



**LOCAL FARMERS
MAY APPLY FOR
AWARDS TO
BENEFIT LOCAL
NON-PROFITS**

Kansas farmers in select counties have the opportunity to win awards to help community non-profit organizations of their choosing. The \$2,500 awards are available through Monsanto Fund's America's Farmers Grow Communities Project™.

In Kansas, one winner will be drawn from each of the state's 67 participating counties. Eligible counties in the region include Clay, Cloud, Dickinson, Jewell, Marshall, Republic and Washington.

The program is intended to benefit nonprofit community groups and local organizations such as FFA chapters, 4-H clubs, fire departments, community centers and schools. It is a program sponsored by the Monsanto Fund to support local farming communities.

Registration is completion of a short online entry form. The registration period ends *July 31, 2010*.

For more information or to apply, visit www.growcommunities.com.

FROM THE DIRECTOR: SUMMER MONTHS CONTINUE TO BE ACTIVE IN THE REGION

Summer is here, but things have not slowed in the region.

North Central Regional Planning Commission staff assisted a dozen communities with proposals in the June supplemental round of the Community Development Block Grant program administered by the Kansas Department of Commerce. These proposals are competing with 52 other applicants for about \$7 million in funding. August 3 award announcements are anticipated.

Recently, severe storms racked areas north of U.S. Highway 24. Training and communication equipment provided through Homeland Security Council avenues better enabled response and recovery efforts in the aftermath.

Fortunately, no persons were seriously harmed



Doug McKinney, is the NCRPC Executive Director

during the many episodes that occurred.

Unfortunately, acres of wheat, fall crops, trees and structures were damaged.

Mutual aid was provided on numerous accounts which is a tribute to the American spirit and the attitude of many Kansans.

On a more personal level, the NCRPC has been touched with the loss of special Veterans of Foreign War and 4-H leaders in

recent days. Each served others to further a cause much bigger than them.

My tribute this Independence Day is to all who sacrifice, volunteer, and otherwise make a concerted effort to enable citizens of this nation to enjoy freedoms and opportunities.

They are loyal and helpful to those in need. Our nation and its servants have a special meaning this July as several faces are absent. They were willing to lay self on the line for our glorious land at home or abroad. At times like this we are reminded that it is not who you know, not what you did, but how you live. I encourage you to pay it forward as a means of honoring those who have sacrificed for you.

Wishing you a safe, meaningful and restful summer during the months ahead.

WEB DESIGN, FACEBOOK CLASSES OFFERED

A series of classes will be available in July for businesses wanting to expand their presence in the ever-changing world of technology.

The North Central Kansas Small Business Development Center (NCK SBDC) will offer Website Design Made Easy, Facebook 101—Setting Up a Personal Facebook Account, and Facebook 201—Growing Your Business on Facebook.

All three classes will be taught in Concordia at OCCK, Inc. on July 12 and

in Salina at the Salina Area Chamber of Commerce offices on July 14.

"We are really trying to target existing businesses or ones starting within a few months," Linda Sutton, NCK SBDC Business Consultant, says.

In Website Design Made Easy, participants will learn how to build a low cost website and maintain it.

Facebook 101 participants will learn how to set up their own personal facebook page.

Building on that knowledge, Cindi Gill,

President of the Durant, Oklahoma, Main Street Program, will teach participants in Facebook 201 how to create a business page, publish it, and become a fan. In addition, ideas will be shared on how to create an engaging page and market a business through this social media site.

Advance registration and payment as well as a laptop computer is required. Contact the NCK SBDC at 785-243-9913 or visit www.ncksbdc.com for more information.

FUNDING SOURCE MATRIX ONLINE

Many resources are available to help member cities and counties and non-profit organizations evaluate and address their respective needs.

One of the resources available from the NCRPC is a funding source matrix. NCRPC staff has compiled this listing of known sources of funds that may be applicable for potential projects both large and small. Most of these sources have been used at some point in North Central Kansas.

While this is not an exclusive list, every attempt is made to keep the matrix current.

It is currently available by clicking on the pdf file on the NCRPC website at the bottom of the following page:

[www.ncrpc.org/
services/
community.html](http://www.ncrpc.org/services/community.html)

INNOVATION AROUND THE REGION

When faced with the desire to freshen the look of 346 light poles in the Lee District in downtown Salina, replacement or hiring professional painters were not in the budget.

Phyll Klima, Executive Director of Salina Downtown, Inc., (SDI) says the reality was spending an estimated \$190,000 for hired labor or up to \$1 million to replace the poles entirely. Instead, a committee ran the numbers and realized that volunteers could repaint the poles and preserve the beauty of the downtown.

Plans were then made for a Pole Party on May 22 with a goal of recruiting 191 volunteers.

"It's a huge elephant," Klima said in a May SDI newsletter. "When 191 of us take a small bite we can eat this elephant in just three hours."



A volunteer paints the base of one of the light poles in the Salina downtown. (Courtesy Photo)

And eat it they did. Around 150 people showed up to help sand and repaint the 30-year old light fixtures. It is estimated that only about \$2,000 was spent in supplies for the project.

"It has been heartwarming to see this happen," Klima says.

Share your own community's innovative idea! We are asking you to submit your good ideas for accomplishing a project or solving a problem—large or small—past or present.

To submit your idea, e-mail Lori Thielen at lthielen@nckcn.com.

MEET THE BOARD



Tom Arpke

Tom Arpke became a NCRPC Executive Board Member in 2009 after being elected to the Salina City Commission.

Tom operates a travel business, Arpke, Inc. He formerly designed mechanical packaging equipment and has been involved with power plant functions and cooling system operations for power plants and ethanol production facilities in a four-state region.

He is a graduate of Florida State University, majoring in microbiology with emphases on math and chemistry. He and his wife, Beth, have been married since 1974. They moved from Wichita to Salina in 1992. The couple has four daughters, one son and five grandchildren.

Tom served on the Salina Library Board for eight years and was involved with Leadership Salina. He is active with the Salina Rotary Club, Salina Symphony and the Salina Municipal Band, playing trumpet. He also enjoys traveling and spends time refurbishing his 135-year old home.

KANSAS ENERGY CONFERENCE ANNOUNCED

The program agenda for the 2010 Kansas Energy Conference has been announced.

The conference will be October 12 - 13, at Wichita's Century II Performing Arts & Convention Center. It is Co-sponsored by the Kansas Department of Commerce and the State Energy Office. Sessions will take place on the following:

Wind energy: manufacturing and supply chain.

Solar energy: emerging technologies, both PVE and solar thermal.

Biofuels and biomass projects: the latest projects aimed at utilizing biomass for energy and policy and project updates from the biofuels industry.

Energy efficiency and conservation: cost-effective

approaches to residential and commercial retrofits, and updates on state and federal initiatives, including energy codes.

Accessing state and federal funds for public projects: available resources and best practices for public projects.

Visit kcc.ks.gov/energy/conference.htm for registration updates.

RADER LODGE REBUILDS AND RECOVERS FROM FIRE

When a fire caused extensive damage to the Rader Lodge west of Glen Elder in November 2007, owner Jeff Rader was forced to scramble to find other accommodations for the many hunters who were scheduled to stay at Rader Lodge during a busy hunting season.

Today, Rader Lodge, Inc. has recovered from the fire that destroyed much of the lodge. It has rebuilt to two-thirds of its original size and converted the owner's apartment to a recreational area and dining room. The lodge now has 10 rooms with six persons per room for a total occupancy of 60. In addition, Rader had purchased and remodeled a building in downtown Glen Elder that has a capacity of 16 persons.

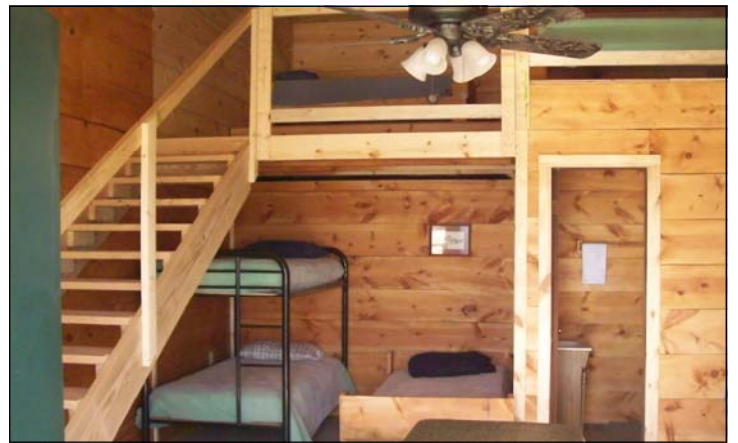
The lodge, located at Waconda Lake, was established by Jeff Rader in 1986. Rader Lodge, Inc. offers pheasant, waterfowl, deer and turkey hunts for single hunters or

groups of up to 60 people on 25,000 acres of land in North Central Kansas. Guided fishing packages on Waconda Lake are also available. The business was recently featured in the Wichita Eagle-Kansas.com.

Murray McGee, Mitchell County Community Development Director, says this project assisted a long standing business rebuild and grow.

"Hunting, especially pheasant and deer season, is very important to our local economy," McGee says. "Accommodating these hunters is very important to Rader Lodge and many other businesses in our community."

This project was made possible with funding from the Farmers & Merchants State Bank of Cawker City, the North Central Kansas Business Development Fund, StartUp Kansas, and investment by the owner. Completion of this project assisted in the retention of 7 FTE jobs.



The Rader Lodge interior pictured after the fire and as it is today.

For more about the financing programs used, contact Debra Peters, NCRPC Business Finance Director, at 785-738-2218

or by email at dpeters@nckcn.com. For more information about Rader Lodge, visit www.raderlodge.com.

Interested in rural and community development? Visit our sister sites!
 Online Journal of Rural Research
 and Policy
www.ojrrp.org
 Eye on Kansas
www.eyeonkanssas.org

North Central Regional Planning Commission
 109 N. Mill, P.O. Box 565, Beloit, KS 67420
 Phone: 785-738-2218
 Fax: 785-738-2185
www.ncrpc.org

