



## NCRPC BOARD TOURS BOURBON TRUCKING & TRAILERS

The NCRPC Executive Board of Directors continued its annual field trip tradition and this year chose to tour Bourbon Trucking & Trailers in Jewell. The company received assistance through the North Central Kansas Rural Business Development Tax Credit Program (NCK RBDTC).

Led by the father/son team of LeRoy and Eric Bourbon, the company has designed and manufactured a new line of pup trailers to add to its existing trucking and repair/service divisions. The duo stressed the connectivity of their business across the region. For more information about the business, visit [bourbontrailers.com](http://bourbontrailers.com).

**Top:** NCRPC Board and staff are pictured with LeRoy and Eric Bourbon and Angela Waters, all of Bourbon Trucking & Trailers.

**Bottom Left:** A trailer is manufactured in the state-of-the-art facility. A 2008 F3 tornado leveled Bourbon's previous facilities.

**Bottom Right:** The Bourbon Pups' hoppers were designed with no 90-degree angles and no weld seams in the corners.



## Project Funding Development Services Offered at NCRPC are Diverse

When a city, county, or non-profit organization has needs beyond its own financial capacity, grant funds are often a first choice option if available. The NCRPC has experienced staff available to help member cities and counties and non-profits evaluate and address their respective needs.

Services include but are not limited to general planning, strategic planning, project planning and management, capital improvements planning, meeting facilitation, funding source identification, and proposal preparation. Staff can conduct custom searches for funding that may be available for a

potential project. Through nearly 40 years of serving North Central Kansas and a continual commitment to staff training, the NCRPC has developed a vast store of knowledge about funding sources available for various community improvements. The staff is willing

*(Continued on page 2 — Funding)*

### Leadership : NCRPC Executive Board

**Chair:**

Johnita Crawford, Cloud Co.

**Vice Chair:**

Tim Vandall, City of Ellsworth

**Secretary/Treasurer:**

Brian Ellert, Mitchell Co.

**Executive Board Members:**

Janelle Dockendorf, Dickinson Co.

Steve Errebo, Lincoln Co.

Dwight Frost, Jewell Co.

Aaron Householter, City of Salina

Joe Koch, Saline Co.

Ray McGavran, Ottawa Co.

George McCune, Marshall Co.

Murray McGee, Mitchell Co.

Roger Otott, Washington Co.

Virgil Palen, Mitchell Co.

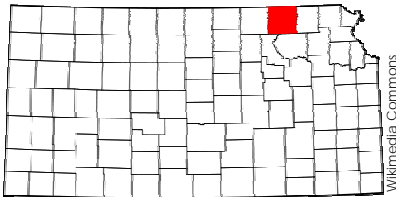
Kermit Rush, Ellsworth Co.

Frank Rytych, Republic Co.

David Thurlow, Clay Co.

## George McCune Joins NCRPC Executive Board

George McCune was appointed to the NCRPC Executive Board of Directors in Spring 2012 as a representative for Marshall County. He has served as the Marshall County Economic Development Director since March 2008. The county, which is home to about 10,500 people, has a diverse economic base that includes agriculture, industrial and service businesses.



Location of Marshall County

Prior to his position in Marshall County, George was Executive Director of the Clay County Economic Development Group and was the first Cowley County Economic Development Director. He also has led five different chamber of commerce organizations in Kansas and Colorado throughout his career. In addition, George served from 1988 to 1998 as a Kansas Department of Commerce and Housing Business Development Representative. George received degrees from Neosho County Community College in Chanute, Kansas, and Kansas State University. He also has completed the United States Chamber of Commerce Institute for Organization Management.

## What to Consider Before Pursuing a Grant

Scarce resources are one of the biggest reasons that a community or non-profit group seeks grant funding. A recent article in the Grantsmanship Center April 2012 newsletter issue discussed what should be asked before pursuing a grant. The article contained passages excerpted from The Bridgespan Group's October 2011 article, "The Donor-Grantee Trap: How ineffective collaboration undermines philanthropic results for society, and what can be done about it," by Thomas J. Tierney and Richard Steele. To view the entire article, visit [www.bridgespan.org/the-donor-grantee-trap.aspx](http://www.bridgespan.org/the-donor-grantee-trap.aspx). While the article was written for non-profit executives, their boards, and their major donors, the concepts also hold true for communities.

- 1.) Do you and the funder agree on strategy?
- 2.) Are you clear about the real costs of implementing a project, including the costs of necessary overhead?
- 3.) Are you sure the funder will support those costs through the grant or help you find other sources to come up with the total amount needed?
- 4.) Do you and the funder agree on the length of time it will take to establish success or failure?
- 5.) Do you and the funder agree on what needs to be measured in evaluating the project, how and when those measurements will be reported to the funder, and how the measurements will be used to improve the work?

### *(Funding — Continued from page 1)*

to meet with government entities and non-profits to determine the best possible mix of funding sources to complete a project.

The NCRPC has successfully prepared grant applications either alone or with partner agencies to the following programs and others: Assistance to Fire Fighters Grant Program, Community Development Block Grant Program, Economic Development Administration, United States Department of Agriculture Rural Utilities Service Program, Kansas State Historical Society Historic Preservation Program, Kansas Health Foundation, and Safe Routes to School Program.

When no appropriate grant program is available the NCRPC can also discuss long-term financing options

that might meet cash needs for certain projects. The NCRPC staff has experience with KDHE Revolving Loan Funds and USDA Rural Development Financing. If issuing bonds is necessary, staff can discuss what various types might meet your needs and refer you to bond attorneys and financial consultants who can walk you through the process.

In addition, the NCRPC has compiled a list of sources of funds that it has either worked with or seen used in the 12-county region it serves. Every effort is made to keep this list current. To view the funding source matrix, visit [www.ncrpc.org/services/community.html](http://www.ncrpc.org/services/community.html).

Contact the NCRPC office at 785-738-2218 with questions or to request project development assistance.

## looking ahead : Dates, Meetings, and Deadlines

### Thursday, May 24

Executive Board Meeting  
Clay Center, 2 p.m.

Please Note: There will be no Executive Board meeting in the month of June.

### June 5-6

Rural Grocery Summit III, Manhattan  
[www.dce.k-state.edu/conf/ruralgrocery](http://www.dce.k-state.edu/conf/ruralgrocery)

### Thursday, July 19

Executive Board Meeting  
Beloit Main Office, 2 p.m.

### FY 2013 CDBG Grant Deadlines

Housing — Aug. 30, 2012  
Water and Sewer — Sept. 27, 2012  
Community Facilities — Nov. 1, 2012  
KAN STEP Round 1 — Aug. 15, 2012  
KAN STEP Round 2 — Feb. 15, 2013  
Economic Development — Open Window Jan. 1-Dec. 10

Ever observed fire ants after a rain deluge? There were a few of these very wet events in mid-April in North Central Kansas. Fire ants have bodies denser than water. But, they can survive heavy rains and even floodwaters. Why and how? Researchers at Georgia Tech have discovered they were created with cilia that trap air bubbles. Thus, the ants are floaters when they should sink. However, they would float away as individuals if the colony did not stay together. They also ride out the flood by clinging to one another.

We has humans can learn from this in this season of storminess. With budget challenges and economic uncertainty, organizations, businesses and local units of governments must stay connected before disaster strikes and train so they can help each other recover afterwards.

As Homeland Security fiscal agents for several regions of Kansas, the NCRPC sees and encourages the ex-

tensive training opportunities at state-wide and regional settings to practice preparedness and responsiveness.

Likewise, employment opportunities are growing in rural Kansas as opposed to urban areas such as Omaha, Kansas City and Wichita.



Doug McKinney is NCRPC Director.

While large companies such as H&R Block, Boeing, Sanofi and Thyssen-Krupp are downsizing in the aforementioned metro places, manufacturers and service providers are seeking employees in many North Central Kansas counties.

Incentives such as the Rural Opportunity Zone may be helping. According to Kansas Commerce officials, 284 new households have resulted since August 2011 in the eligible counties participating in the attraction program.

Places working together can make a greater impact on developing and attracting entrepreneurs, young adults and retirees much more so than those tackling such tough assignments individually.

## Disaster Recovery Exercise Provides Training



Pam Kemp, Clay County Emergency Management Director, discusses the need for building inspections.



Approximately 40 attended the Disaster Recovery Exercise on April 11 in Salina.

The North Central Kansas Regional Homeland Security Council and the NCRPC hosted an exercise on April 11 at the Webster Conference Center in Salina. The topic of the exercise was “Local Government Role in Disaster Recovery.” Approximately 40 people attended.

Individuals presenting at the exercise included Joe Koch, Saline County Emergency Management; Pam Kemp, Clay County Emergency Management; Chancy Smith, Dickinson County Emergency Management; Dave Nowak, Saline County Highway Department; Phil Weishaar, City of Chapman Mayor; Tim Smith, Astra Bank; Doug McKinney, NCRPC; and Janelle Dockendorf, Budget Development and Economic Development Coordinator for Dickinson County.

The Household Weatherization Program managed by the NCRPC has undergone significant change for the 2012 program year. The most noticeable change is the fact that the income guidelines have been reduced drastically from the guidelines of the last three years. Eligibility for the Weatherization program is based solely on income.

The NCRPC receives funding for the Household Weatherization Program from two sources including the Department of Energy (DOE), which provides 25% of the funding, and the Low Income Energy Assistance Program (LIEAP), which provides 75% of the funding. The LIEAP funds are funneled through Social and Rehabilitation Services (SRS).

The 2012 income limits for the DOE funds have dropped to \$22,340 for one person. However, this is only 25% of the funding the NCRPC receives for the program. The 2012 income limits for the LIEAP funds have now dropped from \$27,247 for one person to \$14,521.

“We did question the decision and asked that they at least wait until 2013 to give the program time to make the adjustment, but to no avail,” Margaret Cathey, NCRPC Weatherization Director, says. “It was early February before we got this devastating news.”

Many applications the NCRPC has received will now only be eligible for the DOE funding and there will be an extremely long wait.

“We also had to notify around 300 applicants that they were no longer eligible for either grant,” Cathey says.

### 2012 Program (Dept. of Energy) Maximum Income Guidelines

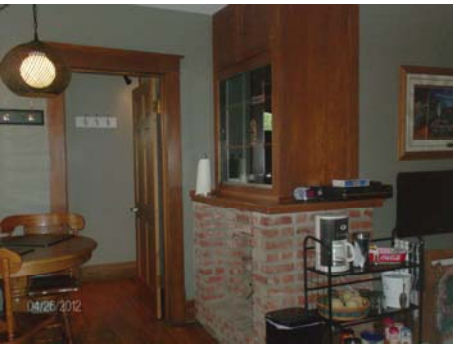
Family Size	Income Maximum
1	\$22,340
2	\$30,260
3	\$38,180
4	\$46,100
5	\$54,020
6	\$61,940
7	\$69,860
8	\$77,780
9	\$85,700

## business updates

# Couple Renovates Historic Landmark in Glen Elder and Opens New Lodge

A unique building with history in Glen Elder dating back to its construction in 1926 — most notably as the E.W. Norris Castle Service Station — now has new life as a place for overnight lodging.

Glen Elder Castle Lodge is located on the downtown square in Glen Elder near the Waconda Lake. The building, constructed entirely of native limestone rock, is listed on the National Register of Historic Places.



The Winkel's refurbished the building's original oak floors and woodwork.

Previously NCRPC assisted with a Heritage Trust Fund project that helped preserved the structure. Owners Dan and Linda Winkel have worked on the latest renovations over the past three years and were careful to maintain the historical significance of the property and reuse everything

that they could. The Winkel's refurbished the building's original oak floors, woodwork, and windows. The couple also has done a significant amount of landscaping to complement the unique exterior.

Dan says it's been a long process, but well worth the work.

"We get so many good comments from people about restoring something that has historic value," Dan says. "My goal was to restore it so that it can be here for years to come. We appreciate everyone who has worked together to help make this project happen."

The first official guests stayed at the lodge on May 4. The Winkel's are hoping to cater to a variety of uses for the property including couple or family getaways, hunting and fishing trips, reunions, business retreats and family gatherings. The lodge can comfortably accommodate four to six people. It also has a large outdoor patio area with a grill. The city pool is located across the street. Dan and Linda live just south of the lodge.



The Glen Elder Castle Lodge is located on the downtown square in Glen Elder at 100 S. Market Street.

Dan, a native of Glen Elder, has owned the building since 1976. He says the building was known as the castle station for years and he and Linda wanted to name the business in a way that would reflect that — hence the Glen Elder Castle Lodge.

This project was made possible with funding from the owners, the Farmers & Merchants State Bank of Cawker City, and the Four Rivers NCKBDF Loan Pool.

For more about the financing programs used, contact Debra Peters, NCRPC Business Loan Director, at 785-738-2218 or [dpeters@nckcn.com](mailto:dpeters@nckcn.com). For more about the Castle Lodge, visit [www.gleneldercastlelodge.com](http://www.gleneldercastlelodge.com).

North Central  
Regional Planning Commission  
109 N. Mill, PO Box 565  
Beloit, KS 67420  
785.738.2218  
[www.ncrpc.org](http://www.ncrpc.org)

