

Capital Improvement Planning

NORTH CENTRAL REGIONAL PLANNING COMMISSION



What is a CIP?

Capital Improvement Plans (CIP) act as long term guides that provide a schedule of construction or acquisition of capital improvements and provide a framework for how they will be funded.

Cities, counties and non-profit entities all benefit from the capital improvement planning process. Those with a plan in place also have an easier time accessing funding from federal and state sources.

How the NCRPC Can Help

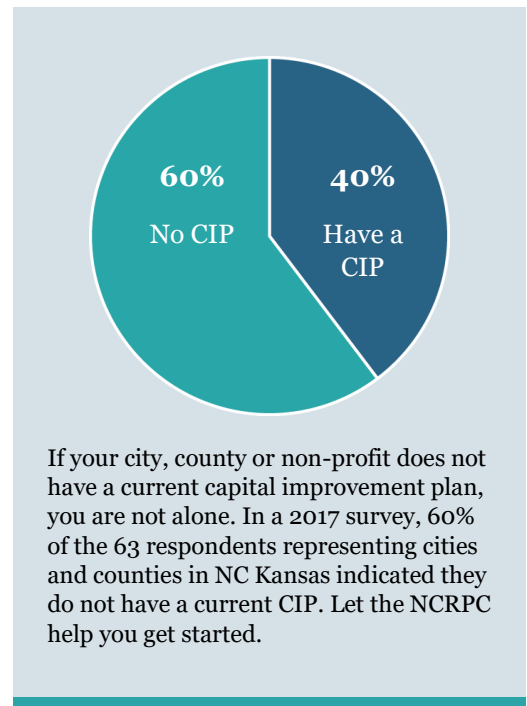
Whether you are developing or updating a CIP—North Central Regional Planning Commission staff will provide valuable resources and planning assistance.

Our step-by-step “recipe” approach will help guide your city, county, or non-profit entity toward a usable plan that will help chart a five-year plan of action leading to enhanced decision making for improvements.

An Investment in Your Future

Contact us to discuss your needs and get started.

- Initial presentation session at no charge.
- Approximately 5 meetings for CIP development (we recommend these occur at special meetings).
- Additional meetings or phone conferences scheduled as needed. Total NCRPC fee not to exceed \$1,000 plus mileage.



NORTH CENTRAL REGIONAL PLANNING COMMISSION

785-738-2218 | 109 N. Mill Street | Beloit, KS 67420 | www.ncrpc.org | [facebook.com/ncrpcbeloit](https://www.facebook.com/ncrpcbeloit)