

# North Central Regional Planning Commission 2019 ANNUAL REPORT

## Introduction

The North Central Regional Planning Commission (NCRPC) believes regional collaboration among stakeholders is vital for success. Together, we made great strides this past year. This report contains some of the highlights that were accomplished in 2019.

The programs and highlights that are included in this report represent the collaboration and partnerships of many working together to help make our communities more innovative, prosperous, and resilient.

**Thank you for your continued support! We look forward to continuing to work with you in 2020.**

## About the NCRPC

The NCRPC is a multi-county comprehensive planning and development organization that has been advancing rural Kansas for over 45 years.

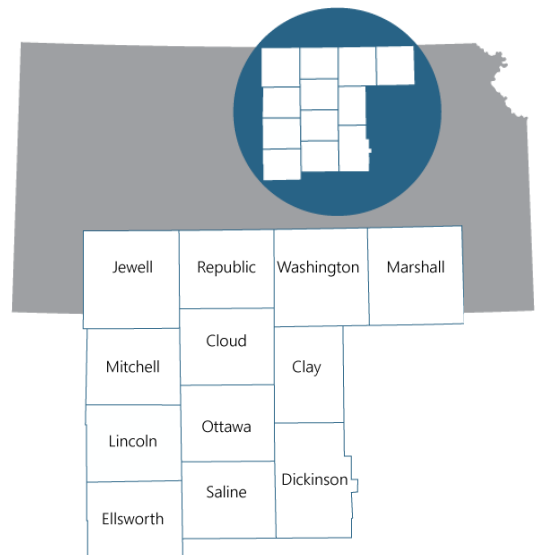
The North Central Regional Planning Commission Economic Development District includes 12 counties in North Central Kansas and 83 member cities. In addition, a number of programs/services extend into much of Kansas.



See service areas for each program area:  
[ncrpc.org/about/service-area/](http://ncrpc.org/about/service-area/)



**Our Mission** is advancing rural Kansas through comprehensive planning and development services.



**North Central Regional  
Planning Commission**  
*Serving Kansans Since 1972*

**12 counties**

**The NCRPC Region**

**136,628 people**  
(ACS 2013-17 5-year estimates)

**83 cities**

## Helping Communities Prosper

NCRPC assisted organizations and communities with numerous projects that were awarded private or public funds. With assistance from NCRPC, **6 Cities were awarded Community Development Block Grant funding for FY2019** to complete two comprehensive water projects, truck route improvements, drainage improvements and build two new swimming pools. When completed, these projects will have invested nearly **\$13 million** back into the region.



NCRPC administered a CDBG Commercial Rehabilitation project that helped restore a former depot on North Santa Fe Avenue in Salina.

### Also in 2019:

- Assisted 8 cities with **project planning and application preparation** for FY2020 projects. The results of these applications will be announced in January 2020.
- Assisted multiple entities in preparing applications to the **Heritage Trust Fund and State Historic Tax Credits program**.
- Worked with the Flint Hills Regional Council to complete a **Joint Land Use Study (JLUS)** on a proposed corridor of training between Fort Riley and the Smoky Hill Weapons Range.



NCRPC administered a CDBG Community Facilities stormwater drainage improvement project throughout the City of Linn. CDBG funds were matched with a USDA Rural Development Loan and city funds.



## Business Finance Solutions

In 2019 the NCRPC Business Finance Program assisted **15 projects** in obtaining funding (1 wholesale, 2 retail, and 12 service type businesses) to either start, improve, expand, or purchase a business. The NCRPC Business Finance Program assisted these projects with direct loans and/or in obtaining financing through its loan packaging services in the amount of **\$745,000 for projects totaling \$3,250,000**. These projects **created 10 jobs and retained 28** in our core 12-county service area.

## Improving Energy Efficiency

The NCRPC administers the Weatherization Assistance Program for **41 counties in Kansas**. The program provides weatherization assistance to low income households to increase the energy efficiency of their homes. This reduces residents' energy costs and ensures their health and safety. In 2019, there were **144 completions** with approximately **368 residents** being served.



An example of a recent multi-family weatherization project that NCRPC administered in Ness City.

## Strengthening Housing

NCRPC addressed local housing needs by administering housing rehabilitation projects and related inspection services. In 2019, **rehabilitation was completed on 11 homes in 3 communities** in the region. In addition, **311 properties** were assessed through the Nuisance Abatement pilot program.



The NCRPC manages affordable housing units for local developments in Beloit and Jewell with a combined total of 13 units. Pictured here is Heritage Townhomes of Jewell.

### Also in 2019:

- Staff completed a variety of **inspection services** including 10 asbestos inspections, 15 radon measurements, 24 First Time Homebuyer inspections, as well as lead soil tests, and lead risk assessments/clearance.
- Home Ownership Pilot Programs were completed in **4 counties and 1 city** – including Cloud, Ellsworth, Lincoln, and Mitchell counties and the City of Marysville. The program assisted in the purchase of **38 homes** in the region in 2019 through down payment and closing cost assistance.



Housing rehabilitation was completed on 11 homes in 2019.



Representatives of 13 county health departments that make up the North Central Kansas Public Health Initiative (NCKPHI) Region participated in a Point of Dispensing Clinic exercise in January.

## Improving and Protecting Health

NCRPC continued to work with **13 local health departments** through the North Central Kansas Public Health Initiative (NCKPHI) to improve and protect the health of their communities. The NCRPC provides administrative, fiscal and support services of the regional public health emergency preparedness and response grant.



## Supporting Safe and Secure Communities

NCRPC continued to serve as fiscal agent for **6 of the Regional Homeland Security Councils in Kansas**, which includes all but three counties. Project investments address the planning, organization, equipment, training and exercise needs that help build local and regional response capabilities and encourage citizen safety and preparedness.



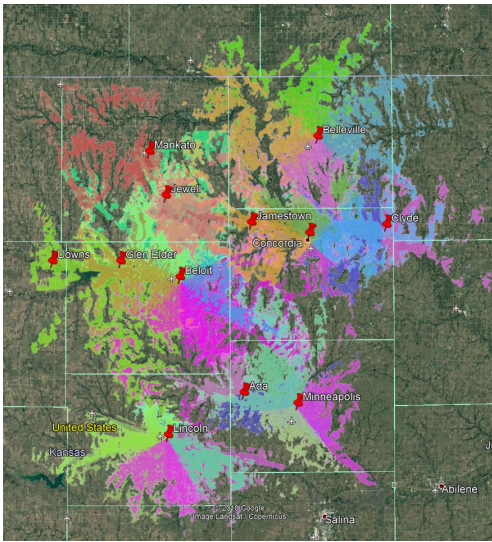
Project investments address the planning, organization, equipment, training and exercise needs that help build local and regional response capabilities and encourage citizen safety and preparedness.



A full-scale exercise in Osborne County this year provided an opportunity to test emergency response capabilities. The NCRPC is fiscal agent for six Regional Homeland Security Councils.



Learn more about NCRPC services at:  
[ncrpc.org/services](http://ncrpc.org/services)



A NCKCN coverage map.

## North Central Kansas Community Network

NCKCN (a NCRPC affiliate) connects rural households and businesses to the Internet through a variety of services. It provides high speed fixed **wireless Internet in 9 communities** in the region. Also, in conjunction with Cunningham Telephone & Cable, NCKCN provides free Internet service, **NCK-WiFi, at 16 locations** in 7 cities.



NCKCN is also the region's 501(c)3 non-profit organization dedicated to community development. NCRPC and NCKCN manage the region's Rural Business Development Initiative (Formerly Tax Credits). The North Central Kansas Rural Development Initiative includes **19 counties**. The program was made possible by the Kansas Economic Growth Act of 2004. The tax credits ended in 2013.

## NCRPC Boards & Committees

The work of the North Central Regional Planning Commission would not be possible without the many individuals who volunteer their time to serve on boards and committees of the NCRPC, for projects the NCRPC administers, or for its affiliate, NCKCN. We **thank you** for your partnership!

- NCRPC Executive Board
- NCRPC Development Committee
- NCK Rural Business Development Initiative Committee
- NCK Food Council
- NCKCN Board of Directors-501(c)3
- NCRPC Revolving Loan Committee
- Four Rivers Business Development Loan Fund Committee
- NCK Housing Opportunities, Inc.-501(c)3
- Four Rivers Housing Opportunities, Inc.-501(c)3



NCRPC Executive Board members take a field trip to a location in the region each year. In 2019, the board met in Ottawa County and toured the G.L. Huyett facilities.

## Connect With Us

To keep up with the latest news from around the region, we invite you to like us on Facebook and sign up to receive the NCRPC newsletter that is sent by e-mail every other month. Just scan the QR code with your phone for the link to subscribe or e-mail [nrcpc@nckcn.com](mailto:nrcpc@nckcn.com).



## North Central Regional Planning Commission

*Serving Kansans Since 1972*

109 N. Mill Street | Beloit, KS 67420  
785-738-2218



[facebook.com/nrcpcbeloit](https://facebook.com/nrcpcbeloit)



[nrcpc.org](https://nrcpc.org)