

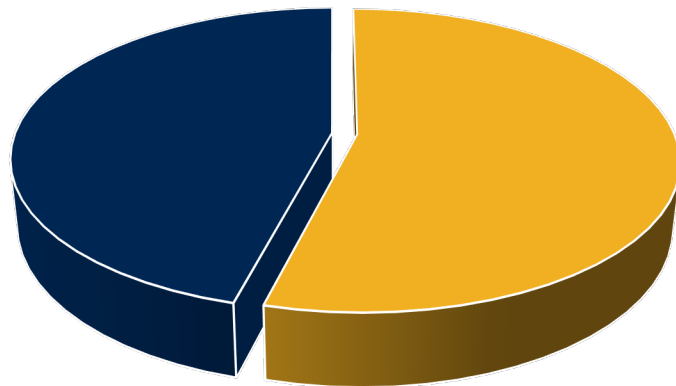


Stronger Together



Who is BIL?

- Bipartisan Infrastructure Law (BIL)
 - AKA Infrastructure Investment and Jobs Act (IIJA)
- National Infrastructure Investment = \$1.2 Trillion across 5 years
 - Nearly 400 programs across 12 Federal Agencies
 - 60% Formula (\$650 Billion) / 40% Discretionary (\$550 Billion)



■ Formula ■ Discretionary

Formula vs. Discretionary

Guaranteed vs. Earned



An Important Side Note

FORMULA

- Guaranteed Dollars
- Distributed via existing or new FORMULA-BASED programs

State Based Distribution

- \$50 Million Formula Program
- \$1 Million Per State

DISCRETIONARY

- Earned, Competitive Dollars
- Distributed via existing or new GRANT-BASED programs

Merit Based Distribution

- \$50 Million Grant Program
- \$5 Million to Waterville
- \$10 Million to Lincoln
- \$35 Million to Boulder



Resource Alert!

- The Guidebook
 - Rural Playbook
 - Technical Assistance Guide
 - Tribal Playbook
- Find all the Books online
kshub.org
 - Original Source: build.gov



Resource Alert!

- Local Infrastructure Hub
 - Designed specifically for small communities
 - Population of 150,000 or less
 - Technical Assistance Program for 5 upcoming programs
 - Registration NOW OPEN

localinfrastructure.org

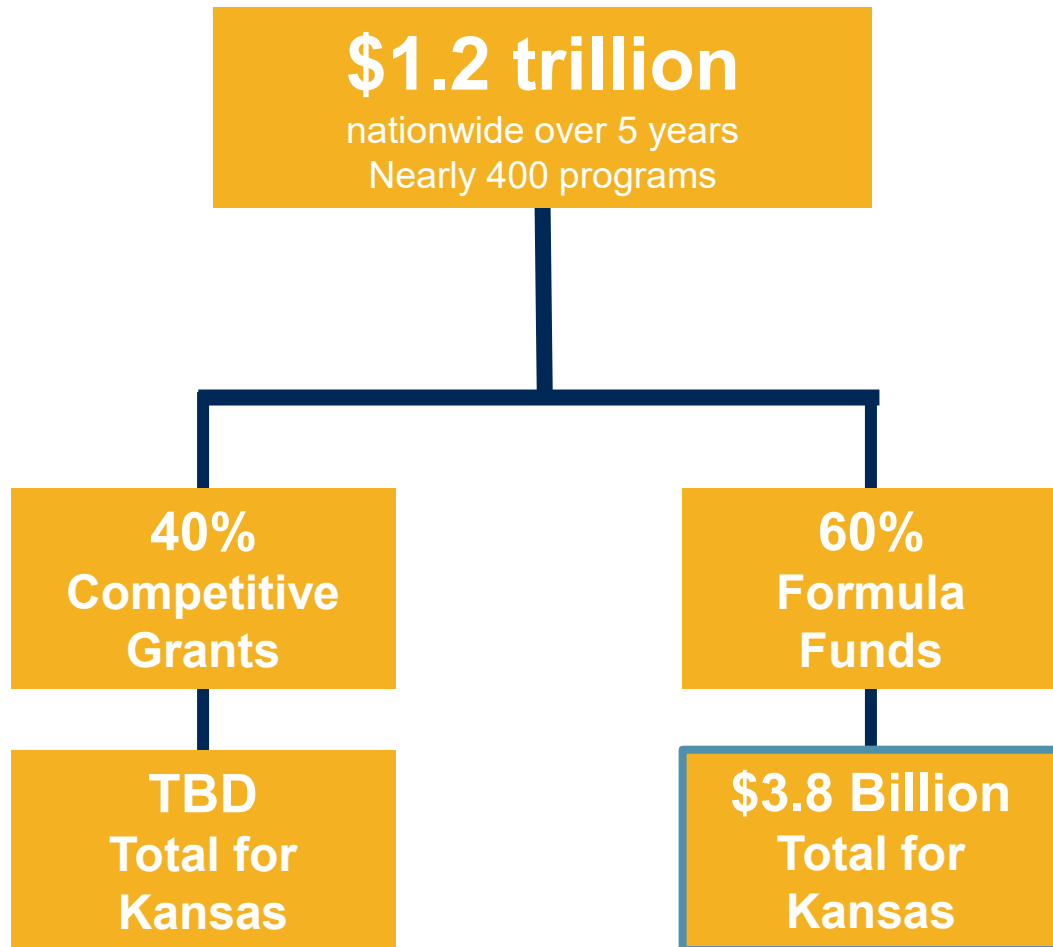


BIL is for...

- Infrastructure Sectors
 - Transportation (roads, bridges, rail, transit, aviation)
 - Climate, Energy, Environment (water, remediation, energy & power)
 - Broadband (internet)
 - Resilience (cybersecurity, climate change impacts)
- All types of projects
 - Damns, Lead Pipes, Electric Charging Stations, Carbon Capture, Roads, Bridges, and, and, and...
- All types of recipients
 - Cities, Counties, MPO, Tribes, States, and, and, and...



Kansas BIL Funds



Kansas Formula Funds: 5-Year Total



Transportation

\$3.2 billion



Energy & Power

\$40 million



Broadband

\$100 million



Water & Sewer

\$454 million



Resilience

\$25 million



Cybersecurity

\$14 million

Statewide Total: \$3.8 billion

From A to Z

- Prioritize projects
- Identify BIL Program(s) & Timelines
- Visit website of Authorizing Agency
 - Sign Up for Updates/Webinars...all of it
- grants.gov
 - There's a whole process...it takes time




CAUTION

Local Match Requirements
Technical/Grant Expertise
Administration Burden/Eligibility



Resource Alert!

- Program Release Schedule
 - Constantly Evolving
- kshub.org/grants
- bil@ks.gov




IIJA IMPLEMENTATION RESOURCES

As Governors lead on implementing the historic Bipartisan Infrastructure Investment and Jobs Act (IIJA), the National Governors' Association will be continuing to provide timely and actionable resources, create opportunities for Governors and their staff to convene and collaborate, and maintain relationships with critical federal, state, local, and private sector stakeholders. This page will serve as a one stop shop for information on all these efforts.

[IIJA Implementation Resources | National Governors Association](#)

Described as a "one stop shop" for information on IIJA/BIL, including:

- Calendar of upcoming funding opportunities and milestones
- Listing of federal resources broken down by federal agency
- Formula and competitive grant program tracker



IMPLEMENTING INFRASTRUCTURE INVESTMENTS AT THE COUNTY LEVEL

THE BIPARTISAN INFRASTRUCTURE LAW (P.L. 117-58)

Mar 9, 2022

[Implementing Infrastructure Investments at the County Level | National Association of Counties](#)

A resource for counties, includes information such as:

- Open notices of funding for county governments
- BIL funding matrix for counties



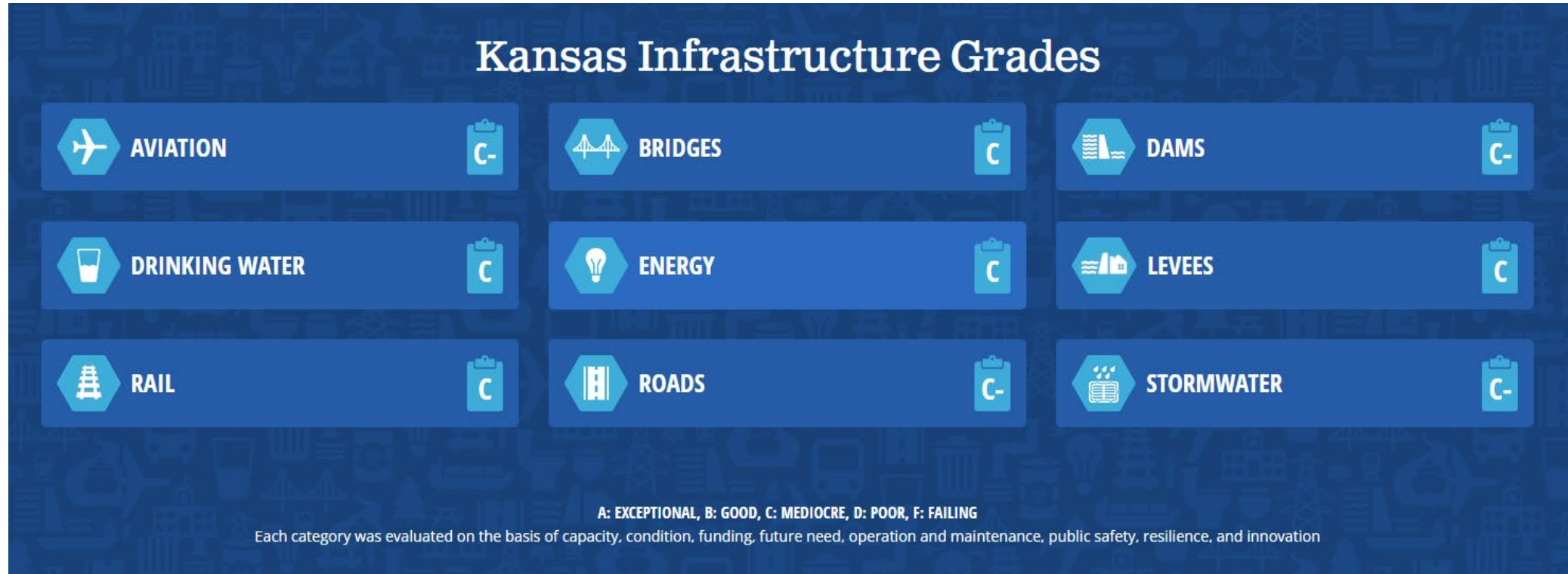


Opportunity is missed by most people because it is dressed in overalls and looks like work.

--Thomas Edison--



There's Work To Do





Broadband Speed Test Study: Over 1 Million Kansans Can't Get 100/20 Mbps

Posted on March 31, 2022 by Joan Enright

f t in p e

Market Research

13 News Weather Sports Latest Video Livestream Send It In

Third boil water advisory issued for Rossville in just over a month

By Sarah Motter

Published: May. 31, 2022 at 4:20 PM CDT

f e t p in



Investigation: 26 high-hazard Kansas dams in poor condition

By ROXANA HEGEMAN November 10, 2019



WICHITA, Kan. (AP) — Nearly a century ago, the Atchison, Topeka and Santa Fe Railway built a large dam near Augusta to supply water for the steam locomotives that at the time were chugging

LOCAL

Water main break causes significant damage to WSU Old Town

by: Stephanie Nutt

Posted: May 31, 2022 / 04:56 PM CDT

Updated: Jun 1, 2022 / 07:48 AM CDT



In light of cybersecurity attacks, Kansas panel recommends tackling workforce, coordination barriers

Andrew Bahl Topeka Capital-Journal

Published 10:12 a.m. CT Oct. 28, 2021 | Updated 4:03 p.m. CT Oct. 28, 2021

View Comments

f t e



Finding The Sweet Spot



Kansas Infrastructure Hub



Kansas Infrastructure Hub

- Hub Lead
 - Kansas Department of Transportation, Secretary Julie Lorenz
- Subcabinet
 - Agencies receiving bulk of FORMULA funding
 - Kansas Department of Transportation
 - Kansas Department of Commerce
 - Kansas Department of Health and Environment
 - Kansas Department of Agriculture
 - Kansas Department of Administration
 - Kansas Corporation Commission
 - Kansas Water Office
- Advisory Group
 - Public & Private Organization Leaders, Big Thinkers, Collaboration



The Hub...

...is NOT:

- Mandate
- Gatekeeper
- Funding Source
- Scheduler
- Approver

...IS:

- Information Exchange & Resource Center
- Connector
- Working Group
- Voluntary
- Collaborative



What's The Hub Doing?

- Kansas Infrastructure Summit
- kshub.org
- Establishing State Investment Priorities
- Examining & Reducing Barriers
- Building Partnerships
- Community Engagement
- Grant & Resource Match-Making



Even With So Much Opportunity...

- Getting lost in a crowded field
- Pace
- Prioritize
- Meet new national themes
 - Safety
 - Equity
 - Resilience
 - Climate Change
- Limited Resources
 - Money: Local Match
 - People: Grant/Technical Writers, Workforce
- Supply Chain
- Project Readiness



X + Y = Success

- **Collaboration**
 - Think Big: Don't let Zip Codes and Jurisdictional boundaries be barriers
- **Prioritize**
 - Of course, we want it all...
- **Resource Allocation**
 - Leverage opportunities, partnerships, and ...
- **Communicate**
 - Share the challenges, opportunities, and solutions
- **ENGAGE**
 - Be part of the action!





~~Rural vs. Urban~~

AND





Republicans

~~**OR**~~

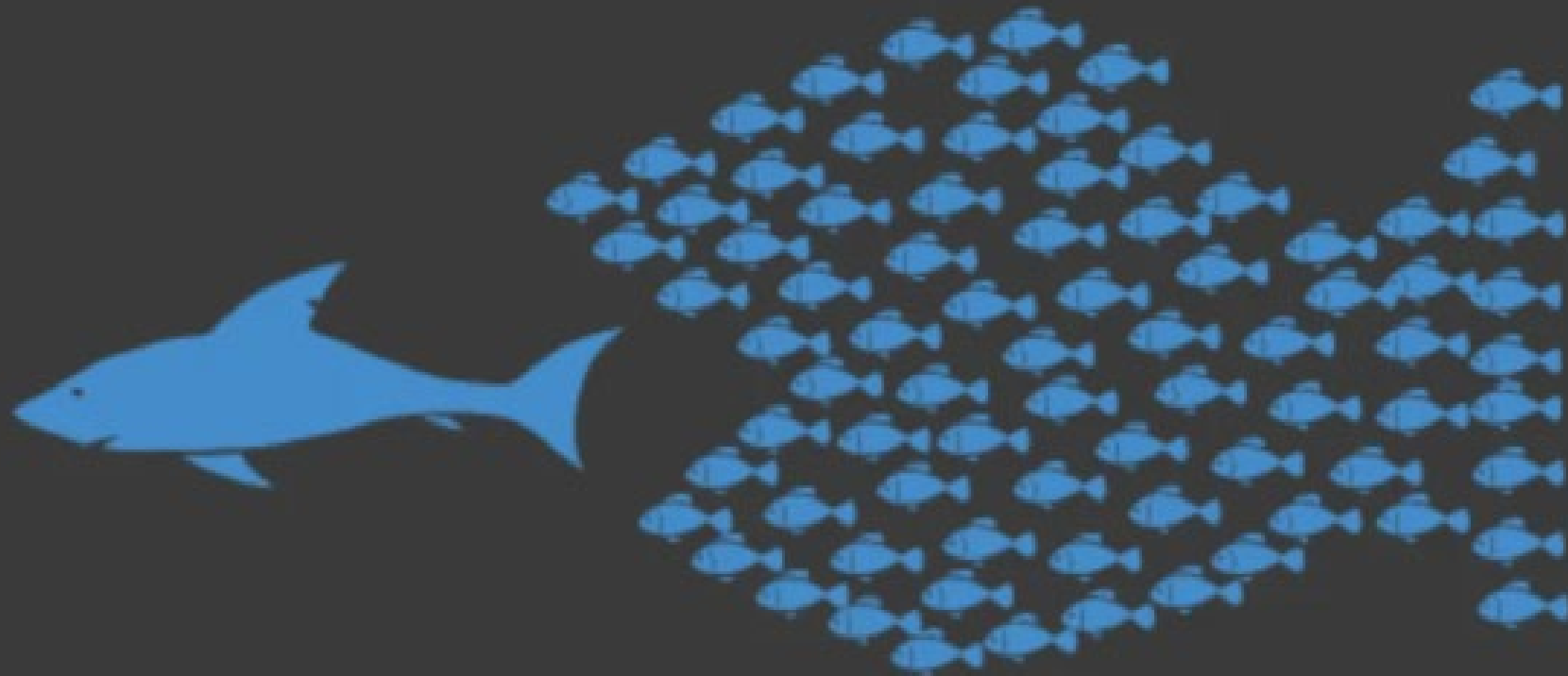
Democrats

AND



Public Sector ~~vs.~~ Private Sector

AND





Vanessa Lamoreaux

Grants & Special Projects, KDOT

785.296.7499 | BIL@ks.gov